



Holdan Limited
01457 851000
www.holdan.co.uk

CONTENTS

Page 2 - 3
Panasonic

Page 4
Blackmagic Design

Page 5
Grass Valley

Page 6
TV One

Page 7
Apac Systems

Page 8
Datavision
Cambo

Page 9
Sonnet Technology
HP

Page 10
Teradek

Page 11
Harmonic
Focus Enhancements

Page 12
Datavideo

Holdan takes aim with new HD switchers



BVE 2012 will see a strong line up of professional vision mixers on Holdan's stand. Three new models on show all have broadcast credentials but take different approaches to design and features.

Datavideo's SE-3000 is a dedicated mixer, with up-to 16 HD-SDI inputs. It has HD up-conversion of 8 sources and a 7" touch screen interface for colour adjustment, menu navigation and keying.

As with all Datavideo products, the emphasis is on established values of rugged build, dependable performance and the essential features producers really need, such as first class 3D DVE and TV-quality



chromakey.

Panasonic appears to have taken a similar route with its new AV-HS410E but a closer look reveals some stand-out features. Its 9 inputs are upgradeable to 13 while new plug-ins allow flexible expansion of software-based functionality. A software development kit is supplied so that integrators can programme additional features, such as the control of remote PTZ cameras. This is a mixer capable of fulfilling a variety of roles in the live event and broadcast world.

Blackmagic Design takes a radically different tack. Its ATEM 2 can be operated without a control panel at all: cross-platform software gives users control over the switcher's features, using just a keyboard and mouse. The optional panel (pictured) will undoubtedly give a more familiar feel to experienced vision mixers, but whichever route the producer takes, access to 16 HD inputs, with frame synchronizers and multiple effects is on-tap.

Panasonic HPX250 wins plaudits



Panasonic's AG-HPX250 P2 camcorder has been approved for BBC HD production and is authorised for on-board capture, rather than relying on an external recorder.

Weighing only 2.5 kg, the HPX250 packs advanced features into its compact body: its 3x 1/3" sensors capture full 1920 x 1080 10 bit 4:2:2 video, recording

to the AVC-Intra codec up-to 100 Mb/s on Panasonic P2 cards. Other features include best in class low light performance, variable frame rate shooting and 22x zoom lens that offers the 35mm equivalent of 28mm to 616mm.

The HPX250 is available from authorised resellers.

New Panasonic AVCCAMs now in stock

AG-AC130 and AG-AC160 deliver performance and features

The AC130 and AC160 are based around 1/3", 2.2 megapixel 3MOS imagers to capture native 1920 x 1080 resolution images, with a new, wider 22X HD zoom lens.

Both are robust cameras built for tough environments. They support full HD production at 50i as well as other formats from DV to 720 50p, giving the producer total flexibility.

Sound is recorded in high quality either via the onboard

mic or through the two locking XLR inputs, both with phantom power capability.

While the two cameras fulfill the needs of professional and corporate videography, the AC160 adds a number of enhanced broadcast features, including HD-SDI ports, variable frame rates and uncompressed audio.



STOP PRESS: New firmware to add 1080 50p capture to the AC-160. Go online for details.

New studio plasma monitors

Panasonic's 40" and 50" monitors offer faithful colours, excellent moving picture resolution and wide-angle viewing that come from the self



illuminating plasma displays. They are ideal for broadcast production, post & 3D.

Equipped with a professional-grade engine that features 10-bit processing with YUV 4:4:4 for each channel, the BT300 Series provides a motion-image performance that is 1.5 times that of conventional models.

NEW AW-HE120

The HE120, a new pan/tilt/zoom camera delivers the highest image quality of any integrated PTZ. Featuring a fast 20X zoom lens and three 2.2 megapixel U.L.T. MOS imagers supporting full HD video capture, the compact HE120 is a leap forward in PTZ technology.



It features HD/SD-SDI, analogue component, HDMI, IP control and serial control.

A la carte multi-format vision mixer

The HS410 is a high-end yet compact live production mixer. Its 8 standard SDI inputs, built-in multi-function LCD with vectorscope, high calibre chromakeying and enhanced multiviewer display speak of a quality device.

However, it is the HS410's built-in frame synchronizer, 8 input up-converter, colour correction processor and superior memory functions that set it apart.

Image effects, stills and clips can all be set to memory for instant

recall, giving producers an excellent level of control over the look and feel of their programme or production.



With HD component connectors, DVI ports, tally inputs and RS-422 control, the mixer is capable of fulfilling a variety of roles in the live event sector or the broadcast world.

The HS410 is able to handle feeds from broadcast or professional camcorders, PC systems or external decks and, importantly, it can be used to control remote head cameras, with the use of additional plug-ins.

HD studio cameras - for all!

The AG-HPX371E 1/3" chip camera is a versatile studio and field camera.

It records AVC-Intra 100, Panasonic's broadcast quality HD format to P2 cards, achieving superb quality images.

At under £9,000 for the camcorder, complete with a 17x Fujinon lens, the HPX371 offers excellent value for money, and is a great introduction to shoulder-mount

broadcast cameras.

It has a range of optional accessories to transform it into a fully-featured studio system, that is

ideal for specialist television channels, corporate production and education users.



AF101 lens bonanza

Panasonic has announced that a number of new lenses are now supported by the superb AF101 large sensor camera.

With updated firmware installed, the camcorder can now also work with the following:

- Lumix G X Vario PZ
- 14-42mm F3.5-5.6 OIS
- 45-175mm/F4.0-5.6 OIS
- 100-300mm F4-5.6 OIS
- 14 mm / F2.5 ASPH
- Fisheye 8mm / F3.5

- Olympus M.Zuiko Digital
- ED 12mm F2.0
- 45mm F1.8

- Leica DG Summilux
- 25mm/F1.4 ASPH



The new Panasonic AK-HC3500E studio camera expands the range

The HC3500 studio camera is a native high-definition studio camera system for studio/direct-to-air switcher facilities.

Incorporating three high-performing 2/3"

2.2-megapixel CCDs, a newly developed 38-bit processor, and a 14-bit A/D converter, the HC3500 delivers exceptional HD images.

The HC3500 is available

with a complete studio camera control kit for an HDTV-ready solution.

For details, speak with the Holdan team at BVE.

New HD LCD Monitors

With two HD SDI and a single HDMI input, the BT-L2150 and BT-L1500 features tally lamp, blue only sharpness control and GPI.

They deliver crisp, clear images and are very attractively priced.



New P2 recorder hits the market

Panasonic's new AG-HPD24 is the perfect deck



for broadcast production. It offers 100Mbps AVC-Intra recording and has variable frame rate and 24 fps support. With 422 machine control, HDSDI input/output and HDMI

for monitoring it can be battery powered for use in the field. The deck also features ultrafast USB 3 transfer to PCs.

NEW ATEM 2 Broadcast Panel

Control the most complex live broadcast events with the new console from Blackmagic.

The panel combines with the ATEM 2 Switcher to deliver up-to 16 video inputs, 6 Aux outputs, SDI, HDMI and analogue program outputs, SDI and HDMI multi-view outputs, USB 3.0 as well as down converted SDI and composite outputs.

The DVE engine is very



powerful with 3D borders, light source and drop shadow. Operators can use the DVE for transitions, or route into any of the 4 built in keyers for incredible multi-layer compositions.

Thunderbolt editing

The Blackmagic Intensity Extreme features HD capture and playback in compressed and uncompressed video quality. Extreme has HDMI and analogue ports and is compatible with FCP 7, Premiere Pro, After Effects and DaVinci Resolve.



Teranex VC100 2 channel broadcast processor: 75% off!

The VC100 is new to Blackmagic Design's portfolio, following its acquisition of Teranex. Dramatically, the price of the VC100 has been reduced to just over £13,000, a fraction of the original cost.

The VC100 includes broadcast quality de-interlace, upconversion, downconversion, SD - HD cross-conversion, SD

and HD standards conversion, automatic cadence detection and removal even with edited content, noise reduction, adjustable scaling, aspect ratio conversion, and smart aspect

ratio 4:3-to-16:9 conversion.

This is performed with full timecode and multichannel audio conversion.

The VC100 features 3-D dual-channel conversions, new patent-pending 3-D simulation and the forthcoming 3-D toolkit for matching cameras in 3-D rigs for perfect alignment.



HyperDeck Shuttle 2 & Studio: DNxHD support

Blackmagic Design HyperDeck Studio and the latest version of the Shuttle now support Avid DNxHD recording and playback to MXF and uncompressed files.

These are fully compatible with Media Composer 6 and broadcast industry standards. This compressed format will extend storage capacity by upto 5 times, whilst retaining incredible quality images.



The 220Mbps capture rate is more than adequate for almost all types of HD production while the SDI and HDMI inputs make both devices compatible with digital camcorders from every manufacturer.



Magic conversion

Blackmagic Design has a converter device for every eventuality - in the field, in the operations room, in analogue, digital or fibre environments and in HD or 4K studios.

Ask us for details about the mini and broadcast converters that are perfect companions in the studio or in the field.



Affordable monitoring from Blackmagic Design

SmartView HD features an amazing 17" LCD monitor for SD, HD and 3Gb/s SDI video in full resolution HD. SmartView HD can be easily adjusted remotely over

ethernet. Just as impressive is its ultra-slim, 6RU rack mountable design.

At under £600 and shipping now, it's an excellent choice.

EDIUS supercharged: 1080 50P & 3D



Grass Valley's post production software is the native format editing king. Now, EDIUS has gained support not just for more formats (such as 1080 50P) but for 3D too, in a new preview release.

It enables stereoscopic ingest via STORM 3G / 3G Elite platforms through a single or dual 3G SDI and supports the new AVCHD 3D format that the Panasonic Z10000 records. Once content is on the timeline, editors have access to tools for easy clip pairing for synching left eye/right eye clips, 3D clip adjustment, including automatic convergence adjustment, 3D preview monitoring, realtime colour correction, keyer, transitions and 3D multi-camera editing.

Download a free trial today from the Holdan website.



Connect, edit and work together

The discrete yet powerful, EDIUS Workgroup Storage (EWS) provides a highly affordable shared storage solution for up to six edit stations.

With 8Tb storage and powerful options for media asset management, the EWS is the complete package for small workgroups.

It is pre-configured to join your ethernet network so editors can begin collaboratively working immediately. Its Raid-6 array and dual-redundant power supply unit gives the confidence and security you need.

It's the perfect solution for:

- Production studios
- OB production
- Corporate editing facilities
- Field newsgathering
- Live events
- Educational facilities

Talk to Holdan's specialists for more information.



Grass Valley's T2 recorder... now with Options

The T2 is an HD VTR replacement. It records, replays or timeslips and stores broadcast quality HD and SD video. It enables live clip editing, playlist playback, networking and two channel simultaneous output. Its 7" LCD screen makes use of the T2 intuitive, fast and effortless.

of Panasonic P2 and Sony XDCAM and fill and key support with the T2 Option packs.

Now, it has gone a step further, with native import and playback



Grass Valley STORM Mobile: capture anything, edit anywhere

STORM Mobile gives editors the freedom to work in the studio or on location. It enables very high quality video capture via HDMI (4:2:2, I-Frame, 150 Mb/s) and adds analogue inputs to edit stations.

EDIUS editors will be able to interface with digital and analogue camcorders and playback devices while monitoring

the output in full HD using a low-cost HDMI monitor.

With either a PCIe card or an Express Card interface, STORM Mobile can instantly upgrade workstations and laptops to high-powered edit machines.



Video walls & displays with no limits



The CORIO®Master gives users access to unprecedented levels of video processing power to achieve exceptionally creative and dynamic multiscreen video displays from a flexible variety of video inputs.

It is the ideal video processing system for applications where distribution with windowing is required to different locations and multiple screens.

Using canvases and layouts, different video displays can be setup and saved as presets for various outputs. A layout can contain up to 30 displays/projectors (DVI-U)/output connections.

Each output can be scaled, format converted and rotated through 360° in real-time, without adding delay. Warping controls allow for projection on curved surfaces while projectors can be used off axis with brightness controls to aid in an even distribution of the projected image.

CORIO®Master can handle multiple layouts, each linked to a canvas and each canvas can handle up to 16 windows or picture in pictures.

Ask Holdan for details.

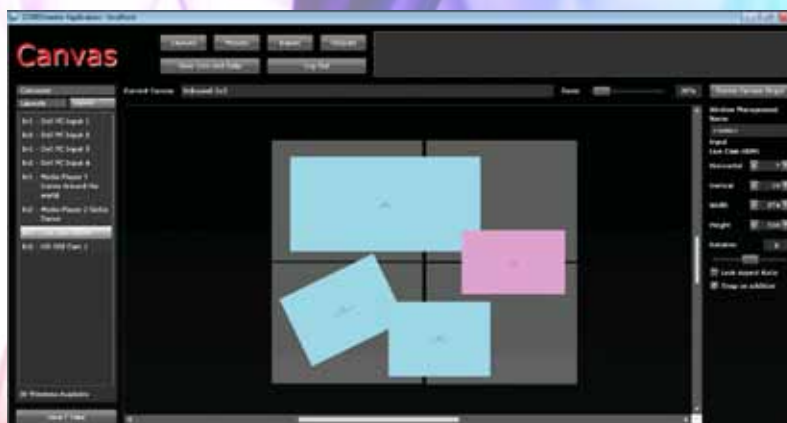
Modular matrix switching



The C3-340 provides high quality modular video matrix switching using a firmware based video routing, switching and video conversion platform.

16 AV universal module slots are available each with 2 inputs or outputs; the CORIO®matrix automatically recognizes the modules inserted as an input or output module. There are no dedicated input or output slots when using 2-Channel DVI-U or 3G-SDI modules. This flexibility allows end user configurations to be based on their own needs.

Visit holdan.co.uk for details on the full range.



Log onto video storage

Apaces eStor E2600 gives workgroups immediate access to as much as 48 terabytes media storage. Optimized for HD content and 2K video material, eStor is lightning fast at up-to 400MBs.

Its gigabit ethernet ports make the device work as fast as your network; users will benefit from fast access to the archived video, graphics, audio and animation that they need. Creatives can access data whether using Apple, Windows or Linux systems.

Configuration is extremely simple, with safe and fast RAID options available to system administrators. Network managers will also appreciate the backup, anti-virus and user management software offered by Apace to make the environment operate efficiently.



Celebrating collaboration

vStor is Apaces solution for collaborative editing environments where multiple users can share project duties, no matter how demanding the content.

Agnostic as to the editing software environment (even supporting Avid users), vStor offers low latency, jitter-free post production. The V4000 top of the range model can support as many as 36 concurrent DVCPRO-HD users or 22 8-bit ProRes 422 editors.

Speak with Apace representatives at the show.



Liberating editors



With Apaces Systems, editors can now work remotely.

Based on web technology, ViEW provides an end-to-end virtualized workflow for multiple branch office content creation, enabling global collaborative video editing workflow via Internet. Users can upload / ingest, search, review, comment and do rough cut of raw video all through a regular browser. This does not require any local special software.

The benefits in efficiency and cost savings are tremendous as editing, peer review, and approval process of media cuts are streamlined. Editors can simply communicate, edit and cut at the timecode level on raw and proxy footage using a backend database managing the collaborative video editing process between different remote editing locations globally.

ViEW is an add-on to Apaces postMAM asset management tool.

For details, please contact the Holdan team.

TERADEK

Teradek BOND

Live video delivery over mobile phone networks

First came CUBE, a miniature camera-top encoder, designed to stream HD over WiFi and IP networks. Monitored and controlled by an iPad or laptop, this revolutionary device was a world first.

Now, BOND. Instantly news crews, video journalists and roving cameras are liberated. Connected in real-time, their footage can go live on air over mobile phone networks.

As the name BOND suggests, it's sophisticated, intelligent and agile. It uses multiple 3G/4G dongles - even a combination from different network operators - to deliver quality pictures from virtually anywhere. And it's very affordable...

Teradek BOND's advantages:

- Avoid on-air gaps: achieve sub 2 seconds latency
- Full server software freely available for total video control
- Instant start-up: begin transmitting today via Teradek's cloud solution
- No transcoding required: MPEG-TS compliant streams for broadcast compatibility

HOLDAN
Broadcast & Professional Workflow Solutions

Low cost professional LED lighting

Datavision's LED lights have proven very popular.

Providing high levels of output, low running costs and very modest pricing, Datavision lights have been adopted by everyone from universities and churches

to independent production companies and freelance camera operators.

Visit Holdan's stand to see the range of studio and on-camera models.



From Datavision: cases even Holmes couldn't crack

Datavision's new range of cases are custom-built for AV professionals and broadcasters.

Ruggedly manufactured, flight-ready and water-resistant, the whole range sets a new standard for cost-effective secure transport cases.

The foam inserts included are of high quality and are

flexible enough to safely house anything from studio monitors and camcorders to test and measurement equipment and lighting units.

Available in four different sizes, these super strong polypropylene cases can be trusted to perform in all but the most severe

environments.

Ask your preferred dealer for the latest pricing.



Tracks, dollies & jibs

Cambo is a world-leader in film and video grip with a versatile range of light-weight, dynamic camera platforms.

Its range is modular and easy to configure to individual needs. The V40 Boom Kit, for example, comes with a remotely controlled motorised pan and tilt unit, a 7" monitor, extension units, dedicated heavy duty tripod and case.

Alternatively, the user can select just the video boom itself which is able to operate with a large range of third party dollies and tripods.



Follow the action with Cambo

The MFC-3 is a single rail follow focus unit which is more compact and flexible than other units available on the market today.

It can be adjusted into different positions to suit the size of lens mounted to the camera and has easier access to the locking mechanism.

The follow focus is suitable for 15mm rails systems, is compatible with any lens from 40mm up to 100mm diameter and comes with a m0.8x46 Drive Gear as standard.

Included with the MFC-3 is the 'new' Flexible Gear-ring which



has adjustable stops which enables you to set the follow focus to stop at the closest focus distance and infinity



Extreme expandability

Imagine using full-size professional video capture cards, 8Gb fibre channel cards, 10-Gigabit ethernet cards, and RAID controller cards with a MacBook Pro.

The Sonnet Echo Express houses PCIe cards and connects via a high speed Thunderbolt port.

It is an elegant solution that allows editors to use non-Thunderbolt devices, such as eSata raid arrays, on a Thunderbolt-equipped Mac computer.

The Echo adapter is inexpensive, easy to use and delivers dramatic speed increases compared

with FireWire 800. The Echo currently supports AJA's io Express, Sonnet CompactFlash and SDXC readers; FireWire, and select eSATA adapters.

Echo Thunderbolt is now available.



Sonnet Qio MR



Qio ingests from Sony SxS, CompactFlash, Panasonic P2 & SDXC media cards at break-neck speed.

The new Mobile Rack version can be installed in a computer's front bay for high velocity media reading.

Qio supports a wide variety of ExpressCard® /34 and CardBus adapter cards, including Gigabit Ethernet, WiFi, USB and FireWire.

Qio is now Mac and Windows-ready

Sonnet Fusion's shared editing solution

Sonnet's Fusion RX1600Fibre sets a new standard for video editing workgroup shared storage, delivering more streams to users than general purpose shared storage, and providing easy expandability.

Sonnet's Fusion RX1600 Vfibre serves 65% more video bandwidth to more users. Fusion RX1600 Vfibre is unprecedented in shared storage,

supporting 4K workflow, providing an aggregate 1600MB/sec to up to 12 directly-connected fibre users, and up to 600MB/sec to Gigabit ethernet-connected users.

Tiger Technology® metaSAN server software is built in

for full asset management capabilities.



HP 8560p blasts through the benchmarks

HP's latest EliteBook with Intel's Sandy Bridge is tailor-made for content creation. It's powerful, highly specified and a perfect match for Blackmagic USB 3 capture cards and Grass Valley's Storm Mobile.

Typical Specifications:

- Windows 7 PRO 64-bit
- Intel Core i7-2620M Dual Core
- 15" Full HD WVA Display
- 8GB 1333DDR3 2DM Memory
- 500GB 7200RPM Hard Drive
- DVD RW Optical Drive
- Intel 802.11; media card reader
- BlueTooth 2.1; eSATA; USB 3.0



Remarkable performance, diminutive package

Sonnet's F2 is a one terabyte eSata RAID drive that can sustain 190Mbs read and write speeds.

It's capable of handling multiple streams of HD - such as ProRes 422 HQ - and rugged enough to go with you, wherever you need to store and edit content.



Bond: LIVE over 3G & 4G

Wherever there's a 3G mobile signal, camera crews can now be connected in HD to their broadcast station with Teradek Bond.

Bond allows on-location video transmission over mobile networks by combining multiple 3G signals for fast, reliable upload speeds at a fraction of the cost and size of alternatives. Bond sits on top of a camcorder and is the smallest, lowest power and

most cost effective 3G bonding solution available.



Go LIVE with Cube

Teradek's Cube, smaller than a cigarette packet, mounts to a camcorder then encodes and transmits live signals as HD H.264 either to ethernet connections or over wifi.

Recent firmware updates allow streaming live over the Net, while iPads can be used to monitor and remotely control the devices.



Get to screen fast

TERADEK

Teradek's CUBE is new. It's something different...

CUBE attaches to virtually any camera. It encodes and transmits the output to a laptop, iPad or portable CUBE decoder for instant play out in great-looking HD.

CUBE can be used for production monitoring, feeding content live to broadcast stations, streaming straight to the Internet or simply freeing cameras from trailing wires.

CUBE does all this using wifi or standard ethernet cable.

CUBE - NO FUSS. NO RADIO LICENCES. LOW COST. GREAT RESULTS.



Teradek's encoders

As well as the pocket-sized Cube, Teradek manufactures three excellent encoders for broadcast, AV and corporate use.

Each model encodes H.264 at user-defined rates from 64Kbs to 20Mbps and feature HDMI for low cost monitoring. Device control options are extensive: locally by USB, over ethernet networks or via RS control.

Odyssey is available in a variety of analogue, digital and professional inputs.

The 3G-SDI enabled Chimera outputs H264, MPEG TS over Ethernet or DVB ASI for maximum broadcast compatibility. Compact, with tough aluminium construction it's a formidable piece of kit.

Full details are at www.holdan.co.uk

Farming formats

Rhozet Workflow System (WFS) is an enterprise transcoding solution with maximum flexibility, scalability and cross-vendor interoperability.

WFS controls multiple ProMedia Carbon nodes configured as a transcoding farm. The distributed nature of WFS allows for automated processing of high-volume transcoding tasks, failover support, managing job distribution, job prioritization, load balancing, FTP transfer, status monitoring, and job notification.



With an extensive API, Rhozet WFS can manage the complete video asset transformation process by integrating additional 3rd Party and Harmonic processing nodes. With the integration of Rhozet Quality Control System (QCS), the automated quality control engine, customers can add automated and scalable video verification processes to their transcoding farm.



21st century format alchemy

ProMedia Carbon is a high speed professional quality transcoding tool. It converts media to a massive array of acquisition, editing, broadcast, web and mobile formats. The software can perform SD/HD processing, PAL/NTSC conversion, logo insertion, colour space conversion, colour correction, close captioning extraction and much more.

New features include export to AVC-Intra 100 and MPEG-2 TS with multiple audio programs.

ProMedia Carbon can be run in automated mode with support for batch processing, watch folders, and automatic FTP transfers. ProMedia Carbon also provides intelligent transcoding to increase productivity by easily identifying source formats and intelligently transcoding them to the desired destination formats automatically.



Supported Video Codecs include:

- MPEG-1, MPEG-2, MPEG-4
- H.263, H.264, VC-1, Flash
- DV25, DV50, DVCPro
- DPS, DivX, JPEG 2000
- DNxHD, AVCIntra Image Sequences
- Windows Media, RealVideo

The Carbon range includes sophisticated options for video capture, live processing, scalable streaming and automated processing.

Whatever your transcoding needs, we at Holdan can help tailor the ideal solution.

Proxys MA Series: pro archiving - now with tape backup

Proxys MA from Focus Enhancements is a media asset management system combined with an automated archive system. The new addition to the range includes a system equipped with an IBM LTO5 drive, with tapes capable of storing 1.5Tb of data.

The ProxSys MA system can automatically copy in video from P2, SxS, SD card or other sources with its standard metadata as soon as it is inserted or attached, automatically creating proxy preview clips. The archived proxy files can be searched on a network or even remotely online, with permitted users able to add or adjust



metadata. Meanwhile the original files are stored on hard drives, Blu-ray disks or high capacity digital tape.

When the full resolution source material is required from the archive, Proxys can quickly assist users to quickly locate the appropriate disk or tape for quick retrieval.

The advantages of tape and optical disk are huge for medium and long-term media storage. They eliminate the cost of running archival RAID arrays unnecessarily for months on end and give decades of secure backup.

Also, the ability to copy optical disks and tapes for storage in multiple locations gives media owners immeasurable confidence.

Go SxS... Go XDCAM EX

Now you can record XDCAM EX files onto SxS cards, shooting on legacy HDCAM, DVCPro HD, or other HD-SDI-based devices.

Focus Enhancement's FS-T1001 recorder sits between the camera and the battery system. The FS-T1001 consumes only 10 watts of power, making operation extremely efficient.

Connecting wires are limited to a single HD-SDI cable which transports not only the video and metadata but also synchronises recording.



The camera records standard XDCAM EX, enabling the video to fit seamlessly into modern broadcast workflows.

Multi-tablet prompting

Datavideo's new TP-300 prompter kit supports tablets running Apple iOS or Android.

The TP-300 Prompter Kit features a new adaptable mounting bracket that can be adjusted to receive virtually any 5 inch to 10.1 inch tablet.

Like the iPad-only TP-200 kit, the new TP-300 comes complete with a quick release camera plate, tablet mounting bracket, two-way reflective glass and black camera snood for a light and flexible production tool.

The TP-300 is quick and simple to use: prepared scripts or cue

sheets can be transferred to the free DV prompter app software on the tablet and scrolled automatically or controlled by a user with the wired or wireless remote according to the producer's wishes. A number of clear fonts, colours and text sizes are available making reading comfortable from a variety of distances. It is ideal for use in either a theatre setting, or a video studio.



New: low-cost studio

Datavideo HS-600 is a light weight SD video studio, which combines an 8 input switcher, with a talkback system, and a multi-view 17" LCD screen.

The HS-600 is designed to meet your demands whether you're working in worship, education, conducting a live OB or shooting inside a production studio. It enables switching between video and audio sources and blend high-quality digital content on the fly.



Think monitors, think Datavideo

From 4" to 17", desktop, rack-mounted, SD/HD...



Flexible conversion

Datavideo DAC products are powerful format converters that enable users to convert the output from any camera. Models include devices that can ingest HDMI signals for connection to professional SDI systems. Others take SDI feeds into affordable HDMI monitoring equipment.

The DAC range is extremely portable and can easily be mounted to a tripod, or directly on the camera.

With Datavideo's converters, mis-matched equipment is a thing of the past while prosumer technology and broadcast equipment can finally and peacefully co-exist.



Datavideo SE-3000 HD mixer

Datavideo's new broadcast switcher is a fully-featured production centre. Despite its advanced technology, it is still highly affordable, with models starting at under £10,000. As such, it is proving very popular across the world with independent production companies and niche TV channels.

The SE-3000 has up-to 16 HD-SDI inputs, upscaling, HD up-conversion of up-to 8 sources simultaneously and a 7" touch screen interface for colour adjustment and keying.

Features include a high quality

multi-view preview output, chroma and lumakey, dual PiP, 32 wipe effects, 88 DVE 3D effects and a full size control panel keyboard, as well as an IP based PC control interface. The SE-3000 also adds a Flex Source effect, similar to having a second M/E, for creative vision mixing.

As with all Datavideo mixers, the build is rugged, performance dependable and the price attractive.

